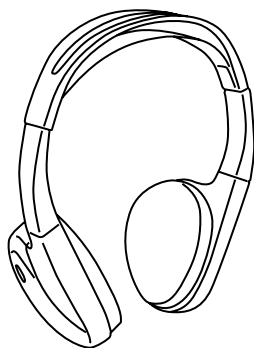




## AUTOMOTIVE INFRARED STEREO HEADPHONE Model IR1CFF

User's Manual



### Audiovox Electronics Corporation WARRANTY

For a period of one year from date of purchase, Audiovox Electronics Corp. warrants that the product sold hereunder will be free from defects in materials and workmanship. This warranty only applies to this unit. Audiovox Electronics Corp. cannot be responsible for losses or damages of any kind resulting from or in equipment failure.

This warranty does not cover damage or failure caused by or attributed to Acts of God, abuse, misuse, improper or abnormal usage, faulty installation, improper maintenance, units purchased or serviced outside the United States, units which have been modified or incorporated into other products, lightning or other incidence of excessive voltage or any repairs other than those provided by Audiovox Electronics Corp., or transportation costs.

**In the event of defect, malfunction or failure of the unit to conform with this warranty, Audiovox Electronics Corp. will repair or furnish replacement for those units or components thereof which, upon test and examination by Audiovox Electronics Corp., prove defective.**

**THIS WARRANTY IS LIMITED SOLELY TO THE ABOVE AND THIS WARRANTY AND ANY WARRANTIES IMPLIED BY STATE LAW WILL APPLY ONLY FOR THE PERIOD SET FORTH. (SOME STATES DO NOT ALLOW THE EXCLUSION OR LIMITATION OF INCIDENTAL OR CONSEQUENTIAL DAMAGES, SO THE ABOVE LIMITATION MAY NOT APPLY TO YOU.) UNLESS OTHERWISE CONTRARY TO STATE LAW GOVERNING THE PURCHASE, THE WARRANTOR'S LIABILITY SHALL NOT IN ANY CASE EXCEED THE CONTRACT PRICE FOR THE PRODUCT CLAIMED TO BE DEFECTIVE OR UNSUITABLE.**

### INTRODUCTION

CONGRATULATIONS on your purchase of Audiovox Automotive Infrared Stereo Headphones. These Headphones let you enjoy music or video without the tangle of cables around you. To ensure the best performance of your headphones, please read this manual carefully.

### SPECIAL FEATURES

Automatic Level Control prevents input signal overloading.  
Uses high frequency infrared light to assure a clean signal for clear reception.  
Adjustable Headphone Band  
Automatic Power OFF - After three minutes without a signal source, the power to the headphone will automatically turn itself OFF.  
Headphones fold flat for easy storage.

### EXPLANATION OF CONTROLS (Fig. 1)

Headphone Receivers

1. INFRARED SENSORS – Receives signal from the infrared transmitters
2. BATTERY COVER
3. VOLUME CONTROL
4. POWER SWITCH
5. POWER INDICATOR LED

This warranty gives you specific legal rights and you may also have other rights which vary from state to state.

### IN WARRANTY REPAIR

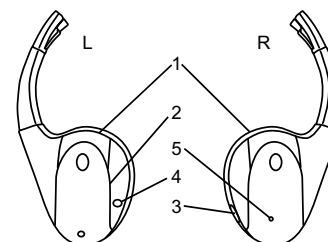
- 1) The purchaser or end user must notify Audiovox Electronics Corp. within 30 days after the defect is discovered.
- 2) The Audiovox product claimed to be defective must be packed so as to avoid damage in transit and must be sent prepaid to Audiovox Electronics Corp.
- 3) The user must enclose proof of purchase and a return address.
- 4) Audiovox Electronics Corp. will replace or repair the unit and return it, prepaid freight.

### OUT OF WARRANTY REPAIR

- 1) The purchaser or end user must notify Audiovox Electronics Corp. within 30 days after the defect is discovered.
- 2) The Audiovox product claimed to be defective must be packed so as to avoid damage in transit and must be sent prepaid to Audiovox Electronics Corp.
- 3) The user must enclose a return address and day time telephone number so that Audiovox Electronics Corp. can contact the user with regard to the Out of Warranty service charge.

*Audiovox Electronics Corp. reserves the right to substitute product of equal or greater value, as they deem necessary. Products returned for repair, or any questions should be sent to Audiovox Electronics Corp.*

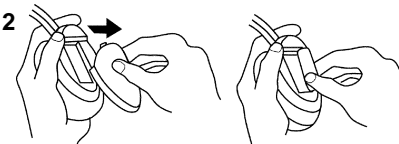
Fig. 1



### BATTERY INSTALLATION (Fig. 2)

1. Place two alkaline AAA batteries into the battery compartment of the Headphones(s), making sure that the battery polarity is correct.

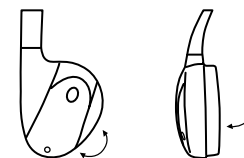
Fig. 2



### Fold-Flat Function (Fig. 3)

1. Fold the earpieces flat for easy storage.
2. Turn the earpieces 90° back to wear on head.

Fig. 3



### OPERATION

Please Read Carefully to Prevent Damage to the Headphones or your Ears:

1. Be sure batteries are properly installed in the headphones.
2. Turn the headphone volume down before turning on the power. Turn on the headphone power then adjust the headphone volume louder to a comfortable level.

### Audiovox Model IR1CFF

**WARNING:** Changes or modifications to this unit not expressly approved by the party responsible for compliance could void the user's authority to operate the equipment.

**NOTE:** This equipment has been tested and found to comply with the limits for a Class B digital device, pursuant to Part 15 of the FCC Rules. These limits are designed to provide reasonable protection against harmful interference in a residential installation. This equipment generates, uses and can radiate radio frequency energy and, if not installed and used in accordance with the instructions, may cause harmful interference to radio communications.

AUDIOVOX ELECTRONICS CORPORATION,  
150 MARCUS BLVD., HAUPPAUGE,  
NEW YORK 11788 • 1-800-645-4994